

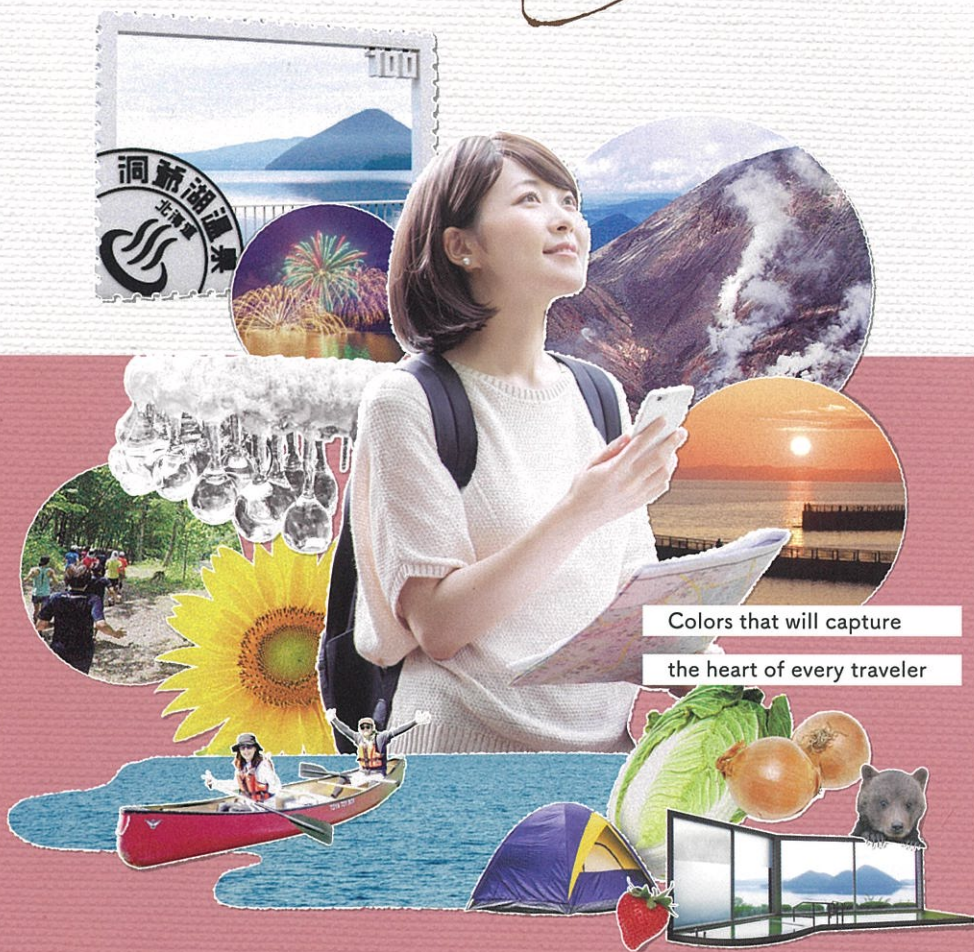
TAKE
FREE

All the great things to see and
do in the 4 areas around Lake Toya:
Date City, Toyoura Town, Sobetsu Town and Toyako Town!

ENGLISH

TOYA

Colors



Colors that will capture
the heart of every traveler

Colors that will capture the heart of every traveler

TOYA

Colors

AREA 01 P03-P12 South Lake Toya Area

The perfect place to start! Enjoy the geothermal baths at the popular Lake Toya Hot Spring (Toyako Onsen) resort, find out more about the area at the Tourist Information Center and learn about the volcanic activity of Mt. Usu at the Volcano Science Museum.

AREA 02 P13-P16 North Lake Toya Area

This area is a treat for the senses, with panoramic views, exciting activities and delicious local cuisine to enjoy along the way.

Date City
(Otaki area)

Toyoura Town

Toyako Town

Sobetsu Town

Shiraoi Town

AREA 03 P17-P22 Osaru River Area

Experience the health benefits of negative ions by following the Osaru River and enjoying the plethora of scenic spots and walking trails. A hot spring flows naturally from the bottom of the river, and the calming effects of the water are matched only by the beauty of the surrounding view.

AREA 04 P23-P28 Funkawan Bay Area

Relax and enjoy the bayside of this volcanic lake at one of the many campgrounds. With a Michi-no-Eki and local stores nearby, you can enjoy fresh local vegetables, fruit and seafood.

Date City
(Date area)

Noboribetsu City

JR Horobetsu Station

Toya-Usu UNESCO Global Geopark: a glimpse into the workings of the earth

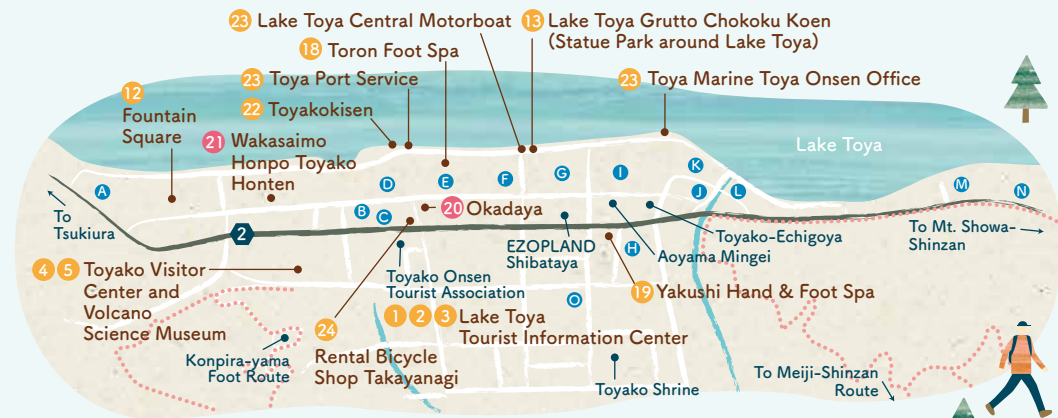
Toya-Usu UNESCO Global Geopark showcases the power the earth has and the natural wonders in our lives, with a focus on how locals coexist with the geological phenomena in this area. The geopark spans four cities and towns: Toyako Town, Date City, Toyoura Town and Sobetsu Town. Lake Toya was formed by an enormous eruption around 110,000 years ago. Mt. Usu was formed through a series of eruptions around 20,000 years ago, and is still an active volcano today. And there are so many ways to experience this fascinating volcanic area—learn about its history at the Volcano Science Museum and facilities like it, immerse yourself in the dynamic landscapes through nature walks and other activities, enjoy delicious local food and recharge in the area's natural hot springs. This is a place that will amaze you and excite you in ways that no other place can replicate.

Information
P29



Learn, play and make great memories

This hot spring area is a smash hit with travelers. With geopark facilities teaching you all you need to know about Lake Toya and Mt. Usu and outdoor fun from boating to horse trekking, there's something for everyone. The hot springs alone offer a wide range of experiences—relax after a busy day in a day bathing facility or one of the many foot spas, or stay the night and enjoy the still, beautiful scenery of Lake Toya. You might even be able to enjoy one of a variety of seasonal events.



Accommodation list

- | | | |
|--|---|---------------------------------------|
| A Hokkai Hotel | F Toya Kanko Hotel | K Toya Kohan Tei |
| B Hotel New Toyoko | G The Lake View Toya Nonokaze Resort | BOUROU LAKE TOYA |
| C Toya Green Hotel | H Yutorelo Toyoko | L Toya Onsen Hotel Hanabi |
| D Hotel Grand Toya | I Toyoko Manseikaku Hotel Lakeside Terrace | M The LakeSuite KO no SUMIKA |
| E GRANVILLAGE TOYA Daiwa ryokan-Annex | J Toya Gokiraku Tei | N Toya Sun Palace Resort & Spa |
| | | O TOYA Center Village |
- (See p.29-30 for details on accommodation)

Start here!

1 Toyoko Tourist Information Center

Your starting point, with everything you need to know about the area!

With the bus terminal and Toyoko Onsen Tourist Association on the first floor and the Hokkaido Toyoko Summit Memorial Museum and Geopark Daichi-no-Megumi Exhibit on the third floor, this is a one-stop spot with everything you need to know about Lake Toya!

- | | |
|------------------------------|---|
| 142, Toyoko Onsen, Toyokocho | 0142-75-4400 (Toyoko Town Tourism Promotion Division) |
| 9:00 AM - 5:00 PM | 0142-75-2446 (Toyoko Onsen Tourist Association) |
| New Year period | |



2 Geopark Daichi-no-Megumi Exhibit

Learn about what makes this geopark so fascinating

A permanent exhibition on the third floor of Toyoko Tourist Information Center. With exhibits from touch panels and photos to rock samples, you can find out all about the great things you can see at Toya-Usu UNESCO Global Geopark and the other geoparks in Japan and around the world.

- | | | | |
|-------------------|------|-----------------|---|
| 9:00 AM - 5:00 PM | Free | New Year period | 0142-82-3663 (Toyoko Town Tourism, Global Geopark and Jomon World Heritage Site Promotion Office) |
|-------------------|------|-----------------|---|



3 Hokkaido Toyoko Summit Memorial Museum

Learn about a summit of leaders from around the world

In July 2008, the Hokkaido Toyoko Summit was held in this area. The old Volcano Science Museum building was renovated to provide a local base for the Japanese government. In this museum, you can see the round table where world leaders discussed global issues.

- | | | | |
|-------------------|------|-----------------|---|
| 9:00 AM - 5:00 PM | Free | New Year period | 0142-74-3015 (Toyoko Town Tourism Promotion Division) |
|-------------------|------|-----------------|---|





Learn

4 Toyako Visitor Center

Vast aerial photos and panels tell the story of Lake Toya's nature

When you go for a walk around Lake Toya, make sure you stop off at the Visitor Center. Here you'll find out all about the nature in the area, from the flora and fauna you'll see at Lake Toya to the ongoing volcanic activity of Mt. Usu.

142-5, Toyako Onsen, Toyakocho
9:00 AM - 5:00 PM 休 New Year period
0142-75-2555



5 Volcano Science Museum

Riveting videos of the eruption of Mt. Usu

Located in Toyako Visitor Center, the Volcano Science Museum showcases the might of Mt. Usu through videos and exhibits. You can also learn important information on how to stay safe in a disaster.

142-5, Toyako Onsen, Toyakocho
9:00 AM - 5:00 PM 休 New Year period
0142-75-2555



6 Nakajima Islands, Lake Toya

An otherworldly group of islands

One of the most iconic sights at Lake Toya is the four islands in the lake: Oshima Island, Kannon Island, Benten Island and Manju Island. Oshima Island, the largest island, has a hiking trail.

Nakajima Islands, Lake Toya
0142-75-4400
(Toyako Town Tourism Promotion Division)



7 Nakajima Mizuumi-no-Mori Museum

Look at the nature of Lake Toya and its islands from a variety of angles

Opened on an island in Lake Toya in 2021, this museum tells you all about the characteristics of this UNESCO Global Geopark and the amazing things you can see here.

Oshima, Lake Toya
9:00 AM - 4:00 PM
0142-75-2756
(Toyakokisen Co., Ltd.)
Closed in winter (Nov. - late Apr.)



8 Fuketsu (Wind Cave)

Cold wind even in summer: a fascinating natural phenomenon

Walk along a trail on an island in Lake Toya and you'll see a fascinating phenomenon called wind caves. You'll be amazed by the chill of the wind that blows through the gaps in the rocks, even in the hottest months.

Oshima, Lake Toya
0142-75-4400
(Toyako Town Tourism Promotion Division)



9 Tsukiura Forest Natural Park

A cherished spot with historical significance

This park was once the villa of the viscount Yasuaki Kato, who tirelessly worked to develop this area during the Meiji period (1868-1912). Stroll along the walking trail, admire the beautiful flora and enjoy the peace of the forest.

Tsukiura, Toyakocho
0142-75-4400
(Toyako Town Tourism Promotion Division)
Closed in winter (Nov. - mid-Apr.)



10 100th Anniversary Toyako

Onsen Monument

A centennial monument with an up-close view of the lake

This monument was built next to the lake to commemorate 100 years since the Toyako Onsen resort was opened. With Lake Toya and its islands in the background, this is an ideal spot for your vacation photos.

220, Toyako Onsen, Toyakocho
0142-75-2446 (Toyako Onsen Tourist Association)



12 Fountain Square

A peaceful lakeside park where kids can play in the fountain

The Fountain Plaza is the gateway to the Toyako Onsen resort. Kids love to play in the water as the fountain shoots up into the beautiful blue sky. There's even a playground with a slide.

144-90, Toyako Onsen, Toyakocho
9:00 AM - 5:00 PM 休 Mid-Oct. - mid-Apr.
0142-75-4400 (Toyako Town Tourism Promotion Division)



See

11 Sunflower Fields

An iconic summer sight by the lake

In summer, you'll be treated to the sight of fields full of sunflowers planted by local farmers. As green manure is used, this photo-worthy sight is in a different place each year.

Sobetsu Onsen, Sobetsucho
0142-66-2750 (Sobetsu Tourist Association)



13 Lake Toya Grutto Chokoku Koen (Statue Park around Lake Toya)

An art experience right on the lakeside

In 1984, a marble sculpture called Kaisei (Resurrection) was built in this park, sparking the creation of an open-air sculpture park. There are now 58 sculptures around the 43km circumference of the lake, all expressing people's connection with nature.

Around Lake Toya
0142-75-4400 (Toyako Town Tourism Promotion Division)



Natural wonders formed by an eruption Volcano Trails

In 2000, an eruption tore apart the area at the foot of Mt. Usu. Buildings damaged by the countless craters and the warping of the ground were preserved, and are now used to teach people how to mitigate the damage caused by disasters.

14 Konpira-yama Foot Route

An up-close view of the damage wrought by Mt. Usu's eruption

Take a walk around Konpira Crater, which was formed by an eruption of Mt. Usu in 2000. You'll see the damage wrought by the eruption in the ruins of old public housing and a public bath house. The trail begins at the jetty behind Toyako Visitor Center.

142-5, Toyako Onsen, Toyakocho
Closed in winter (Nov. 11 - mid-Apr.)
0142-75-4400 (Toyako Town Tourism Promotion Division)



15 Nishi-yama Foot Route

Walk through a landscape permanently altered by a devastating eruption

When Mt. Usu erupted in 2000, it turned the community upside down. The national highway was mangled, collapsed roads looked like staircases and telegraph poles snapped. The devastation is oddly juxtaposed with a tranquil view of Uchiura Bay.

Izumi, Toyakocho
Closed in winter (Nov. 11 - mid-Apr.)
0142-75-4400 (Toyako Town Tourism Promotion Division)



Explore the area on its walking trails

The area around Lake Toya is blessed with abundant nature and breathtaking scenery. And one of the best ways to see that nature up close is to explore it on one of the many different walking trails.

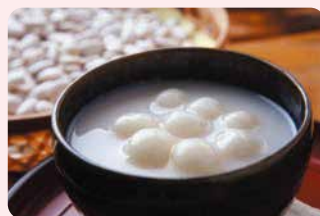


20 Okadaya white oshiruko

A sweet Toyako Onsen specialty that you have to try at least once

One of the most iconic specialties of the Lake Toya area is white oshiruko (sweet beans soup and small rice cake). You can enjoy this at Okadaya, a local restaurant in the hot spring resort. The white color of the dish hints at the subtle sweetness of the beans and milk.

36, Toyako Onsen, Toyakocho
10:00 AM - 4:00 PM
0142-75-2608



16 Toyako Onsen

An abundant hot spring formed by volcanic activity

This hot spring was formed from volcanic activity by Mt. Usu in 1910. Today, there's no shortage of hotels and inns where you can relax and recharge while enjoying some of the best scenery in Hokkaido.

0142-75-2446
(Toyako Onsen Tourist Association)



17 Sobetsu Onsen

A peaceful home away from home

Nestled in tranquil forest to the east of Toyako Onsen, Sobetsu Onsen is the perfect place to get away from it all. The water contains salt and mirabilite, and is said to have a healing effect on conditions such as skin wounds, nerve pain and joint pain.

0142-66-2750 (Sobetsu Tourist Association)



18 Toron Foot Spa

Soothe your tired feet while admiring the lake

Follow the lakeside promenade behind Toya Kanko Hotel, you'll find Foot Spa Toron-no-Yu. There's such a simple pleasure in dunking your feet in the arbor-style foot spa while admiring the view of the lake. It's a great way to pass the time while waiting for the cruise!

Lakeside promenade, Toyako Onsen, Toyakocho
9:00 AM - 10:00 PM late Apr. - end of Oct.,
9:00 AM - 4:00 PM Nov. - mid-Apr.
0142-75-4400 (Toyako Town Tourism Promotion Division)



19 Yakushi Hand & Foot Spa

A plethora of hand spas and foot spas

There are more than 10 hand spas and foot spas in the Toyako Onsen resort—it's unusual to find hand spas and foot spas in the same place. Go for a walk and see if you can find them all! You can even experience a unique combination of two Japanese fortune telling traditions: *ema* (wooden wishing plaques) and *omikuji* (fortunes drawn at random). When you put an *ema* in one of the spas, an *omikuji* fortune will be revealed on one side, and you can write a wish on the other side.

91-9, Toyako Onsen, Toyakocho
9:00 AM - 10:00 PM late Apr. - end of Oct.,
9:00 AM - 8:00 PM Nov. - mid-Apr.
0142-75-4400 (Toyako Town Tourism Promotion Division)



There are other hand and foot spas too!

21 Wakasaimo Honpo Toyako Honten

It's a sweet potato but it's not a sweet potato!

Wakasaimo looks like a grilled sweet potato, but it's actually made of sweet beans and kelp (kombu). You'll be amazed by how similar the melt-in-your-mouth texture is. Made with beans grown around the lake, this specialty has been a favorite for over 90 years.

144, Toyako Onsen, Toyakocho
9:00 AM - 6:00 PM (Restaurant Sendou: 11:00 AM - last order 6:00 PM)
(Opening hours may differ depending on the season)





Experiences/Activities

22 Cruise

Explore the lake on a boat straight out of a fairy tale

Modeled after a European castle from the Middle Ages, the Espoir luxury catamaran is an incredible way to see the lake. Look out over the water and take in the view of Mt. Yotei, Mt. Showa-Shinzan and Mt. Usu in the background. In summer, you can watch the area's Toyako Long-run Fireworks from the boat during a special cruise.

Toyakokisen ☎ 0142-75-2137



24 Rental bikes

Explore the area your way and enjoy the breeze

Rent a bike from the Toyako Onsen resort and enjoy the breeze as you zip along the walking trails around the lake. With kids' bikes and tandem bikes in addition to the standard adult bikes, there's something for everyone.

Rental Bicycle Shop Takayanagi

📍 144, Toyako Onsen, Toyakocho ⏰ 9:30 AM - 4:30 PM
🛏 Open 7 days (closes on some occasions) ☎ 0142-75-2406



23 Rental boats

Enjoy your own marine experience on a motorboat or swan boat

Cruise around Japan's 9th largest lake in a motorboat or enjoy a leisurely chat while floating along on a swan boat. There's a boat to suit whatever pace you're looking for.

Toya Port Service ☎ 0142-75-2757

Lake Toya Central Motorboat ☎ 0142-75-2603

Toya Marine ☎ 0142-75-2525 (Toya Onsen Office)

☎ 0142-75-3467 (Sobetsu Onsen Office)



25 Horse trekking

Ride around the lake for the ultimate nature experience

Enjoy the abundant nature of Toya on horseback! Ride around Lake Toya and enjoy a view all the way to Mt. Yotei. There are various courses to suit all levels of experience and fitness.

Lake Toya Ranch

📍 44, Tsukiura, Toyakocho

🛏 Open every day in summer, closed on Tuesdays in winter

☎ 0142-73-2455



26 Herb distilling

Choose your favorite herbs and make a fragrant souvenir

At a herb field with a panoramic view of Lake Toya, you can use a real distiller to make herbal water—great for a soothing lotion or room spray.

Herbal Ranch

📍 44, Tsukiura, Toyakocho ⏰ 10:00 AM - 3:30 PM (summer only)

🛏 Tuesdays ☎ 090-1529-0438



Yukiyuu Square Snow Activity

* ① Sairo Observation Deck, North Lake Toya Area

Fun in the snow with a panoramic view of Lake Toya, the Nakajima Islands and Mt. Yotei

Race through fields of snow in a raft towed by a snowmobile, or get behind the wheel and steer the snowmobile yourself!

📍 3-5, Naruka, Toyakocho ⏰ 10:00 AM - 3:00 PM

🛏 Closes on some occasions ☎ 0142-87-2221



Campsites

27 Green Stay Toyako

Camp your way with plenty of comfort

This popular trailer campsite is right by the lake with greenery all around. There are also bungalows, cabins and lodges so that you can enjoy the nature with all your creature comforts.

📍 56, Tsukiura, Toyakocho

⏰ Check in 1:00 PM

🛏 Late Apr. - Oct. (summer only)

☎ 0142-75-3377





28 Mt. Usu

This rugged, smoking volcano is an icon of the area

Mt. Usu (around 733m) is an active volcano that was formed by an eruption around 20,000 years ago. It has erupted every few decades since 1663. Steam still rises from the Ginnuma Crater where the 1978 eruption took place.

Toyoko Town, Date City, Sobetsu Town
0145-75-4400
(Toyoko Town Tourism Promotion Division)



29 Showa-Shinzan Bear Park

See Ezo brown bears up close and try feeding them!

This farm raises Ezo brown bears, said to be the largest land animal in Japan. The bears are grouped by age. You can watch them playing and relaxing, and during the Golden Week holidays in late April to early May, you might get to see cubs!

Showashinzan, Sobetsu
8:00 AM - 5:00 PM May - Oct., 8:30 AM - 4:30 PM Nov. - Apr.
0142-75-2290



Natural wonders
formed by an eruption

Area around Mt. Usu and
Mt. Showa-Shinzan

Travel about 15 minutes from the hot spring resort by car
See an active volcano up close and learn about how it

or bus and you'll come to the foot of Mt. Usu.
works at the Volcano Science Museum.



30 Usuzan Ropeway

Enjoy the unforgettable view below

This ropeway takes you from Mt. Showa-Shinzan to the top of Mt. Usu in around 6 minutes. There you can enjoy a panoramic view of Lake Toya and Mt. Showa-Shinzan from the Sancho (Summit) observatory or look out over Uchiura Bay from the Kakogen observatory. And those are just two of the great lookouts you'll find!

Showashinzan, Sobetsu
8:15 AM - 5:45 PM (last trip down) in summer,
9:00 AM - 4:00 PM (last trip down) in winter.
Services every 15 minutes.
Legally mandated inspections are conducted
during a period in winter.
0142-75-2401



31 Disaster Prevention Summit Theater

Learn from locals' experiences about how to stay safe

Located at the Sancho (summit) station of the Mt. Usu Ropeway, this theater shows videos sharing the community's wisdom about how to stay safe in a disaster.

Showashinzan, Sobetsu (inside Usuzan Ropeway Sancho Station)
8:15 AM - 5:45 PM (subject to change in winter)
Free
0142-75-2401 (Mt. Usu Ropeway)



33 Showa-Shinzan Park Service Center

Learn about the wonders of Mt. Usu and
Mt. Showa-Shinzan

Learn about how Mt. Showa-Shinzan and Mt. Usu were formed and the nature around Lake Toya through laser disc videos, dioramas, photos and more at this nature conservation center. It's also a great free place to stop for a rest.

Showashinzan, Sobetsu
Open 7 days in winter (closes on some occasions)
8:30 AM - 5:00 PM
0142-75-2241



32 Toya-Usu UNESCO Global Geopark Volcano Village Information Center

An all-encompassing, easy-to-understand insight
into the area

Coexistence with nature is the theme of this information center, where panels and exhibits of material ejected during eruptions tell the story of the Geopark. This facility gives you an easy-to-understand insight into the nature around the lake.

Showashinzan, Sobetsu (in the Mt. Usu Ropeway station)
8:15 AM - 5:45 PM (subject to change)
Free
0142-75-2401 (Mt. Usu Ropeway)



34 Mimatsu Masao Memorial Museum

The items left by Mimatsu Masao, who recorded
the growth of Mt. Showa Shinzan, are of
international significance

An eruption by Mt. Usu turned an empty field into a new mountain: Mt. Showa-Shinzan. Few places in the world have seen the formation of a new mountain. The entire process was documented by postmaster Mimatsu Masao, and those valuable materials are exhibited here today.

Showashinzan, Sobetsu
8:00 AM - 5:00 PM in summer, 9:00 AM -
4:00 PM in winter
0142-75-2365



Great views and experiences at a slower pace

The northern side of Lake Toya has vast expanses of farmland and rice fields. Enjoy the great tastes of the area at the Michi-no-Eki and gelato store. There are lookouts all around the lake where you can admire the magnificent scenery and take some incredible pictures. If you want a more up close and personal nature experience, try a canoe tour or nature tour with a nature guide.

Start here!

1 Toya Mizu-no-Eki

Freshly harvested fruits and vegetables and more— at wholesale prices!

The market here is a must-visit, with fruits and vegetables harvested by local farmers and processed products made from local ingredients. You can even buy some of the famous Takarada rice. The lakeside walking trail is right outside and the facility is fully equipped with a parking area and restrooms.

- 100, Toyamachi, Toyakocho
- 9:00 AM - 6:00 PM Apr. - Sep., 9:00 AM - 5:00 PM Oct. - Mar.
- 休 Mondays in Nov. - Mar. (Tuesday if Monday is a public holiday), New Year period
- ☎ 0142-89-3108



Takarada rice

The "mythical rice" you won't find just anywhere

The pure water and large temperature variance in the Takarada area create the perfect conditions for growing rice. The award-winning quality and small harvests of Takarada rice have earned it the nickname "mythical rice". You can buy some at the Mizu-no-Eki roadside station.



Recommended specialty

Start here!

2 Michi-no-Eki Toyako

Enjoy the bounty of the lake and the land!

Located on National Highway Route 230, this Michi-no-Eki offers a wide variety of fresh agricultural products from Toyako Town.

- 9-4, Kagawa, Toyakocho
- 8:30 AM - 5:00 PM Apr. - Oct., 9:00 AM - 4:00 PM Nov. - Mar.
- 休 Tuesdays in Nov. - Mar., New Year period
- ☎ 0142-87-2200



Hot Springs

3 Kimundo-no-ie Hot Spring

Relax and recharge after the fun of a camping trip

Next to the Nakatoya Campsite is a log cabin style hot spring facility. This cozy building creates the perfect setting for relaxing in the natural hot spring. In winter, you can experience an "apple bath", where apples float in the water.



- 30-11, Nakatoya, Sobetsucho
- 10:00 AM - 8:30 PM Apr. - Oct. (last entry 8:00 PM), 10:00 AM - 7:00 PM Nov. - Mar. (last entry 6:30 PM)
- 休 Tuesdays (open every day in Jul. - Aug.), New Year period (Dec. 31 - Jan. 3)
- ☎ 0142-66-7022



6 Toya Ikoi-no-ie

A cozy hot spring with a view of Lake Toya

This municipally owned hot spring facility has a panoramic view of Lake Toya through the large window. In addition to the sodium sulfate baths, there's a spacious rest area.



- 199, Toyamachi, Toyakocho
- 10:00 AM - 9:00 PM (last entry 8:20 PM)
- 休 1st and 3rd Monday of each month, New Year period
- ☎ 0142-82-5177



休 Indicates days and/or periods when a facility is closed.

Look, play, explore

Area 02 Toya area, Toyako Town North Lake Toya Area



Recommended cuisine

4 Lake-Hill Farm

Enjoy gelato made from fresh milk with a view of Mt. Yotei

Choose from around 20 permanent flavors of gelato made from milk delivered fresh from the farm every morning and fruits grown nearby. You can also enjoy dishes such as pizza and a veggie-rich curry, and even try making gelato or churning butter!

- 127, Hanawa, Toyakocho
- 9:00 AM - 7:00 PM in summer, 9:00 AM - 5:00 PM in winter
- ☎ 0142-83-3376



Learn

5 Toyako Museum of Art

See works by great Hokkaido artists, including Bikky Sunazawa and Banri Namikawa

Opened in 2008 in what used to be the Toya Village Office building, this art gallery features a variety of great Hokkaido works, including sculptures by Bikky Sunazawa, photos by Banri Namikawa and sculptures from the Toyamura International Sculpture Biennale.

- 96, Toyamachi, Toyakocho
- 9:30 AM - 5:00 PM Apr. - Nov. (last entry 8:20 PM)
- 休 Mondays (Tuesday if Monday is a public holiday) and during winter (Dec. 1 - Mar. 31)
- ☎ 0142-87-2525





8 Ukimido Park

The two-level tower with a statue of an ancient prince is a surprisingly little-known photo spot!

Located on the cape that juts out into Lake Toya, this park has a two-level tower dedicated to Prince Shotoku, who lived in the 6th and 7th century. This historic building contrasts beautifully with the lake. Walking along the winding stone path to Ukimido is an experience in itself.

📍 Toyamachi, Toyakocho
☎ 0142-82-5111 (Toya General Branch)



7 Takarada Shinsui Park

A path along the Sobetsu River that's designed for easy walking

Located on the mountain side of Prefectural Road 132, this park has a 1.5km walking track along the Sobetsu River. The trail has woodchips to make it easy to walk.

📍 131-1, Takarada, Toyakocho
☎ 0142-82-5111 (Toya General Branch)



9 Yuhi-ga-Mieru Nagisa Park

Take in the stunning view of the sun setting over the lake and enjoy the birdsong

This peaceful park is a hit with campers. The name means "park on the shore with a view of the evening sun", and you'll know why as soon as you see the captivating evening view. You can also enjoy bird watching and walking along the Sobetsu River.

📍 Takarada, Toyakocho
☎ 0142-82-5111 (Toya General Branch)



11 Sairo Observation Deck

A unique snapshot of the Toya area

You can spot this observatory by National Highway Route 230 easily—just look for the red brick silo. Here you can enjoy a panoramic view of Mt. Usu, Mt. Showa-Shinzan and the islands in Lake Toya. Rows of specialty stores offer no shortage of ideas for souvenirs.

📍 3-5, Naruka, Toyakocho
🕒 8:30 AM - 6:00 PM May - Oct., 8:30 AM - 5:00 PM Nov. - Apr.
☎ 0142-87-2221



13 Eboshi Rock (Eboshi Iwa)

The trail to the top is a must in summer

This rock formation was created long before Lake Toya even existed, when lava hardened in the ground. A walking trail to the bottom is open in summer.

📍 Iwaya, Toyako-cho ☎ 0142-82-5111 (Toya General Branch)



Experiences/Activities



10 Toya Takarada Nature Experience House

Learn about the Takarada area's nature in this visitor center run by the Ministry of the Environment

This facility has all kinds of activities on offer, from crafts using materials found in nature to wildlife tours amid the area's nature. Panels inside tell you all about the flora and fauna in the area.

📍 3, Takarada, Toyakocho
🕒 9:00 AM - 5:00 PM
📅 Mondays (next business day if Monday is a public holiday), New Year period
☎ 0142-82-5999



15 Toya Guide Center

Seasonal nature tours of the Toya area

From cherry blossom viewing by the lake in spring to canoeing in summer, admiring the variety of colors in fall and enjoying the snowy landscape in winter, every season brings new beauty. Private tours with an English-speaking guide are available.

📍 193-8, Toyamachi, Toyakocho
☎ 0142-82-5002



16 Toya Toy Box

Canoeing on Lake Toya is a memory that will stay with you forever

Explore the lake by Canadian canoeing, an easy method that's ideal for people who are new to canoeing. The beautiful waters and stunning scenery of the lake never look quite the same twice—you'll be amazed how they differ by the season and even the time of day.

📍 224-1, Toyamachi, Toyakocho
☎ 0142-87-2355

12 Takarada Campsite

A lakeside campsite with a beautifully tended lawn

One of the most popular campsites in Hokkaido! With a trailer campsite, cabins and an unstructured tent area, there's something to suit every style. There's a beautiful lawn and a range of facilities including a cooking area and restrooms.

📍 6, Takarada, Toyakocho 🕒 Apr. - Oct. (open in summer only)
☎ 0142-82-5777



14 Nakatoya Campsite

A campsite with a view of Mt. Usu across the lake

Lake views and forest bathing all in one. This campsite is a hit with campers who want to get back to nature, even those who are used to rugged wilderness. With two camping areas, a trailer camping area and a natural hot spring facility next door, this campsite has it all.

📍 Nakatoya, Sobetsucho 🕒 Mid-Apr. - mid-Oct.
☎ 0142-66-3131 (open season only)



Immerse yourself in the nature that thrives on the area's clear water

The Osaru River runs to the east of Lake Toya, carrying clear water from the greenery-rich inland area out to Funkawan Bay. The dynamic waterfalls, tranquil canyon and abundant greenery around the river make this area a nature lover's paradise. Experience the health benefits of the river's negative ions and then get away from it all at one of the secluded hot springs along the river.

Hot springs
and amazing
views!

Area 03

Sobetsu Town and
Otakiku, Date City

Osaru River Area

Start here!

1 Michi-no-Eki Sobetsu Information Center i

From local specialties to a glimpse into Sobetsu's volcanic history—everything you need to know

A one-stop information center for anyone who wants to find out about the lake, volcanic activity and hot springs in Sobetsu. Get tourist information and buy local specialties on the first floor, then head up to the Volcanic Disaster Prevention Museum on the second floor and find out about how people live in a volcanic area like this.

384-1, Takinomachi, Sobetsucho
9:00 AM - 5:30 PM (9:00 AM - 5:00 PM in winter (Nov. 16 - Mar. 31))
Tuesdays in winter (except public holidays), New Year period (Dec. 31 - Jan. 5)
0142-66-2750 (Sobetsu Tourist Association)



Lake Toya

2 Sobetsu Park

5 Morito Kinosato Center

3 Local Products Shop SAMS

18 Sobetsu Fruit Village

14 Sobetsu River

11 Ice spray spot

22 Yuai-no-ie Onsen (Hot Spring)

6 Shinzan Marsh Observatory Park

4 Yokozuna Kitanoumi Memorial Hall

7 Showa-Shinzan Iron Bridge Remnants Park

1 Michi-no-Eki Sobetsu Information Center i

18 Sobetsu Fruit Village

14 Sobetsu River

22 Yuai-no-ie Onsen (Hot Spring)

6 Shinzan Marsh Observatory Park

4 Yokozuna Kitanoumi Memorial Hall

7 Showa-Shinzan Iron Bridge Remnants Park

1 Michi-no-Eki Sobetsu Information Center i

18 Sobetsu Fruit Village

14 Sobetsu River

22 Yuai-no-ie Onsen (Hot Spring)

6 Shinzan Marsh Observatory Park

4 Yokozuna Kitanoumi Memorial Hall

7 Showa-Shinzan Iron Bridge Remnants Park

1 Michi-no-Eki Sobetsu Information Center i

18 Sobetsu Fruit Village

14 Sobetsu River

22 Yuai-no-ie Onsen (Hot Spring)

6 Shinzan Marsh Observatory Park

2 Sobetsu Park

A breathtaking view of Lake Toya and the mountains around it

This park is an incredible vantage point where you can see Lake Toya, Mt. Usu and Mt. Showa-Shinzan, and Mt. Yotei and the Niseko mountains in the distance. Around 300 plum trees grow in the park, and tourists flock here to see the spectacular sight of the blossoms in mid-May.

Higashikohan, Sobetsucho
0142-66-2750 (Sobetsu Tourist Association) Closed in winter



Campsites



5 Morito Kinosato Center

This greenery-rich campsite is a nature experience that will change you

Located on a plateau to the east of Sobetsu Park, the view from this nature activity center will take your breath away. With a woodworking room, seminar room, astronomical observatory and cooking area, this center has everything you could need for fascinating lessons about why forests are such a vital element of nature.

3-1, Higashikohan, Sobetsucho
0142-66-2201 (Yokozuna Kita-no-Umi Museum)
May 1 - Oct. 31
*Reservation required for bungalows



4 Yokozuna Kitanoumi Memorial Hall

See sumo through the eyes of a local legend!

Yokozuna (sumo champion) Kita-no-Umi has made his hometown of Sobetsu proud. This memorial hall tells the story of his 18-year career with exhibits of important items, a life-sized model of him and more. The memorial hall is attached to Sobetsu Community Museum.

294-2, Takinomachi Sobetsucho
9:00 AM - 5:00 PM
Closed in winter (Dec. 1 - Mar. 31)
0142-66-2201



Learn



3 Local Products Shop SAMS

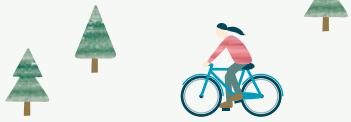
Experience Sobetsu's food culture with fresh local specialties!

At this local store on the first floor of the Michi-no-Eki Sobetsu Information Center i, you'll find Sobetsu specialties, fresh local produce and a café area with original sweets. Make sure you try the cider or apple wine made from locally grown apples.

384-1, Takinomachi, Sobetsucho
(Inside Michinoeki Sobetsu Johokan i Roadside Station)
9:00 AM - 5:30 PM
(9:00 AM - 5:00 PM in winter (Nov. 16 - Mar. 31))
Tuesdays in winter (except public holidays),
New Year period (Dec. 31 - Jan. 5)
0142-66-3600

Eat/Buy

Nature trail



6 Shinzan Marsh Observatory Park

Experience the features of Mt. Usu up close!

This park gives you an up-close view of fascinating volcanic features such as sediments from eruptions of Mt. Usu and Mt. Donkoro, and the marsh that was formed by the same volcanic activity that created Mt. Showa-Shinzan. It's not every day you can see the evidence of such historic volcanic events.

🏠 Takinomachi, Sobetsu
☎ 0142-66-4200
(Sobetsu Town Office Commerce and Tourism Section)



9 Sangaitaki Falls Park

A nature trail with a magnificent canyon view

This waterfall tumbles down three levels of rock. The surrounding trees bring the landscape new beauty with each season and are home to flocks of wild birds, delighting many a walker and bird watcher.

🏠 Sangaitakicho, Otakiku, Date
☎ 0142-82-6748 (Regional Promotion Section, Otaki General Branch Office, Date City)



7 Showa-Shinzan Iron Bridge Remnants Park

A railway remnant on Mt. Showa-Shinzan that shows you just how powerful volcanoes can be

When Mt. Showa-Shinzan was formed, it pushed up the ground where the old nationally-operated Iburu railway line ran. The trestle and abutment of the old railway bridge remains in this park so that people today can see the upheaval that took place in 1943-5.

🏠 Takinomachi, Sobetsu
☎ 0142-66-2121 (Sobetsu Town Office General Affairs Section)

8 Otaki Niagara Falls

A beautiful river meandering through fascinating geological features

Walk about 1km along the trail from the parking area of Otaki General Athletic Park and you'll come to a waterfall where you'll see natural beauty every season.

🏠 Inside Otaki General Athletic Park, Otakiku, Date
☎ 0142-82-6748 (Regional Promotion Section, Otaki General Branch Office, Date City)



10 Osaru River Shiraginu-no-Toko

Vibrant green tuff glimmering in the riverbed

You'll marvel at the beauty of nature as you admire the rainbow colored rocks jutting out of the riverbed, the result of volcanic activity millennia ago. The name means "white silk bed" in Japanese, named for the way it evokes an image of white silk worn by an angel.

🏠 300, Kitayuzawa Onsencho, Otakiku, Date
☎ 0142-82-6748 (Regional Promotion Section, Otaki General Branch Office, Date City)



11 Splash Ice

A beautiful natural formation that can be seen in winter

This beautiful phenomenon can only be seen near a lake like Lake Toya, which is located in a cold area but doesn't freeze. Water sprayed by waves on the lake freezes on trees and rocks on the shore. Ice accumulates throughout the winter, forming ethereal frozen drops.

🏠 Throughout Higashikohan and Kohan, Sobetsu
☎ 0142-66-2750 (Sobetsu Tourist Association)



12 Frost-covered trees at Orofure Pass

The trees are the star of this enthralling scenic spot

Orofure Pass connects the Toyako Onsen and Noboribetsu Onsen hot spring resorts. With stunning greenery in the warmer months, vibrant colors in fall and otherworldly ice formations in winter, every season has its own captivating landscape.

🏠 Benkei, Sobetsu
☎ 0142-66-2750 (Sobetsu Tourist Association)



14 Sobetsu River

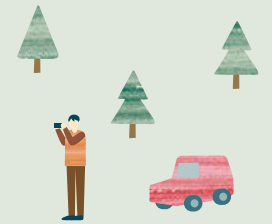
Clear water and a rich ecosystem protected by locals

Originating from Sobetsu Falls, the beautiful Sobetsu River is renowned for the way species such as yamame trout and shrimp have lived here continuously without disrupting the ecosystem. Visit in early October and you'll see masu salmon swimming up the river.

🏠 Takinomachi, Sobetsu
☎ 0142-66-2750 (Sobetsu Tourist Association)



See



13 Mt. Orofure

Beautiful alpine flora and awe-inspiring scenery

This 1,230m mountain is easy enough for beginners with enough fascination to hold the attention of experienced mountaineers. The around 90-minute walk takes you through a vast range of alpine flora. The trailhead used to be the Orofure Pass Observatory, and offers a spectacular view of the Iburu mountains.

🏠 Okei, Sobetsu
🏠 Gate closed in winter
☎ 0142-66-2750 (Sobetsu Tourist Association)



Campsites

15 Orofure Campsite and Ski Resort

Take it slow and enjoy the greenery and mountains around you

This campsite shows you how vast nature can be. And with Lake Toya, Mt. Showa-Shinzan, two municipally operated hot springs and great tourist spots such as the Noboribetsu Onsen hot spring resort nearby, there's plenty to do before and after your night camping.

🏠 204-5, Benkei, Sobetsu 🕒 Mid-Apr. - late Nov.
📞 Mondays ☎ 0142-65-2323 Orofure Resort



Experiences/Activities



18 Sobetsu Fruit Village

Pick seasonal fruit and enjoy all kinds of great fruit products

A tourist farm village in Sobetsu comprising 18 orchards. Each orchard's fruits are sold at markets and the Michino-Eki, with over 50 types of fruits on offer between early summer and fall, from cherries to grapes, prunes and apples.

🏠 Takinomachi, Sobetsucho and Sobetsu Onsen
☎ 0142-66-2333



16 Otaki Area Campgrounds

Two campsites at the foot of Mt. Tokushunbetsu

Enjoy glamping with a café and playground at Mori no Resort Oka no Hoshizora Glamping Villa or camp in the forest at Tokushunbetsu Sanroku Camping Ground, which is located in the grounds of what used to be a local elementary school.

Mori no Resort Oka no Hoshizora Glamping Villa 🏠 40-9, Sangaitakicho, Otakiku, Date
☎ 080-8045-1195
Tokushunbetsu sanroku Camping Ground 🏠 Ueno, Otakiku, Date
🕒 Early May - end of Oct.
☎ 0142-82-6748
(Regional Promotion Section, Otaki General Branch Office, Date City)



17 Otaki Nordic Walking Course

A nature-rich walking course for all ages and fitness levels

With abundant forest and so many hills, this area was made for Nordic walking. This scenic nature experience is good for your physical and mental health—and a great way to meet new people.

🏠 Inside Otaki General Athletic Park, Otakiku, Date
☎ 0142-82-6748 (Regional Promotion Section, Otaki General Branch Office, Date City)

19 Otaki ice stalagmites

An otherworldly phenomenon in Japan's largest natural ice stalagmite cave

Deep in Otaki no Mori Forest, you'll see ice stalagmites, a phenomenon that only occurs in areas with very cold winters. The ones here are called *nyoro-nyoro* (wrigglers) because of their shape. This is the largest group of ice stalagmites in all of Japan, with about 2,500.

🏠 17-3, Honcho Otakiku, Date (Otaki Outdoor Adventures)
🕒 Late Jan. - end of Feb.



20 Bankei Onsen

Surrounded by mountains and a clear river, this hot spring resort will lift your mood

This humble hot spring resort is nestled in the mountains next to National Highway Route 453. With the greenery of the mountains and the rushing sound of the Osaru River, bathing here is an experience that will rejuvenate your body and soul. The mildly alkaline hypotonic water is effective against hardened arteries and nerve pain.

🏠 Bankei, Sobetsucho
☎ 0142-66-2750 (Sobetsu Tourist Association)



22 Yuai-no-ie Onsen (Hot Spring)

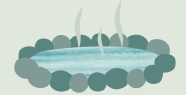
Recharge after a busy day and enjoy the benefits to your skin!

Located at the foot of Mt. Showa-Shinzan next door to the park golf course, this day bathing facility is a great place to recharge after a good game. There's also a rest area where you can sit and relax after a warm bath.

🏠 290-44, Takinomachi Sobetsucho
🕒 10:00 AM - 9:00 PM
📅 Jan. 1
☎ 0142-66-2310



Hot Springs



21 Kitayuzawa Onsen

A natural spring that flows from the riverbed of the Osaru River

The hot spring facilities in the Kitayuzawa Onsen resort line the Osaru River. The abundant spring waters and the breathtaking canyon around the river make this the ideal vacation spot for hot spring enthusiasts. And with foot baths and hiking courses, there's plenty for the whole family.

🏠 Kitayuzawa Onsencho, Otakiku, Date
☎ 0142-82-6748 (Regional Promotion Section, Otaki General Branch Office, Date City)



23 Kubonai Fureai Center

A toasty warm hot spring with a place to rest after a busy day

Located at the halfway point on the route connecting the Toyako Onsen and Noboribetsu Onsen hot spring resorts, this center has a day bathing facility that is beloved by locals and tourists alike. It's a great place to enjoy bathing on the way back from a day of sightseeing.

🏠 151-3, Minamikubonai, Sobetsucho
🕒 10:00 AM - 8:30 PM
📅 Wednesdays, Dec. 31 - Jan. 2
☎ 0142-65-2010





Enjoy the bounties of the area's abundant nature

The Funkawan Bay area extends from Lake Toya and Mt. Usu on one side to Funkawan Bay on the other, spanning three municipalities. The mild climate creates ideal conditions for growing produce while the nutrient-rich waters of the bay are a great spot for fresh seafood, so there are plenty of local specialties to be enjoyed here. It's also easy to get around without a car, as the facilities here are connected by a JR rail service. And if you like the great outdoors, you'll be spoiled for choice when it comes to camping—there are lots of secluded campsites between the coast and the mountains.



Recommended specialties

Delectable vegetables grown in exceptional conditions

With its comparatively warm climate and soil that drains well, Date is a prime spot for growing vegetables. Date vegetables are so famed for their quality that top chefs in Sapporo and even Tokyo swear by them. You can try them for yourself at Michi-no-Eki Date Rekishi no Mori.



Date Vegetables

Strawberries fresh from the farm (May and June)

It's not spring in Toyoura without strawberry farmer's markets, which can be found at Michi-no-Eki Toyoura and various other points along National Highway Route 37 until early summer. You can even enjoy wine and sorbet made with produce harvested in May and June.



Toyoura strawberries

Mountains, sea and memorable foods

Area 04

Date City, Toyoko Town, Toyoura Town

Funkawan Bay Area

Delicious sweet scallops grown here in Funkawan Bay

The scallops from Funkawan Bay in Toyoura are a must-try, whether you like them as sashimi or chargrilled in butter and soy sauce. You can buy them from many places, including Michi-no-Eki Toyoura, Suisha and Natural Hot Spring Shiosai.



Toyoura scallops

Start here!

1 Michi-no-Eki Date Rekishi-no-Mori

Local specialties such as vegetables harvested the same morning

At Date Product Promotion Center, you'll find all kinds of great local products, from produce and seafood to sweets, processed foods and dyed textiles. Next door, at the Date City Museum of History and Culture, you can try indigo dyeing. Date is the only area of Hokkaido where this craft is practiced professionally.

■ 34-1, Matsugaecho, Date ● 9:00 AM - 6:00 PM 休 Dec. 31 - Jan. 4 ☎ 0142-25-5567



2 Michi-no-Eki Aputa

A Michi-no-Eki overlooking the beautiful Uchiura Bay

Located next to National Highway Route 37 on a hill overlooking Uchiura Bay, this Michi-no-Eki sells seasonal vegetables, processed seafood and more. Don't miss trying some scallop-filled curry or fried rice! This is also a handy place to get tourist information.

■ 84-2, Irie, Toyokocho ● 9:00 AM - 6:00 PM Apr. - Sept. 9:00 AM - 5:00 PM Oct. - Mar. Restaurant: 11:00 AM - 2:00 PM 休 New Year period, Tues. Jan. - Feb. ☎ 0142-76-5501



3 Michi-no-Eki Toyoura

A Michi-no-Eki with all of Toyoura's best foods

Toyoura is renowned for its strawberries, scallops and pork, and you'll find them all at the town's Michi-no-Eki. Strawberry season is in spring to early summer, but you can enjoy strawberry soft serve ice cream all year round. In winter, scallops are kept live for extra freshness.

■ 65-8, Asahicho, Toyouracho ● 9:00 AM - 5:00 PM 休 Wednesdays from Nov. to late March, New Year period ☎ 0142-83-1010



Learn

4 Date City Museum of History and Culture

See items from ancient times, including weapons and armor, works of art and Usu Moshiri, an Important Cultural Property

This museum showcases local cultural items and works of art and promotes the area's culture and arts. It's a great place to find out about the history of this area, from the Jomon period (commonly considered to be around 14,000-300 BCE) to today.

🏠 57-1, Umemotocho, Date 🕒 9:00 AM - 5:00 PM
 📅 Mondays (next business day if Monday is a public holiday), New Year period
 💰 300 yen for adults, 200 yen for children age 6-15
 ☎ 0142-25-1056



6 Usu Zenkoji Natural Park

A famous cherry blossom spot in the grounds of Usu Zenkoji Temple

The grounds of the beautiful Zenkoji Temple are full of flowering trees. The cherry blossoms and rhododendrons have to be seen to be believed. Some of the Ezo mountain cherry trees are 190 years old, and are protected by the Hokkaido government.

🏠 124, Usucho, Date 🕒 9:00 AM - 5:00 PM
 ☎ 0142-25-2722 (Date Sightseeing Association)



5 Kitakogane Shell Mound Park

A registered World Heritage Site from the Jomon period

Here you can see a settlement from the early to mid Jomon period, around 7,000 to 4,500 years ago. Shell mounds, a waterside worship site, pit dwellings and tombs tell the story of Jomon culture in this historic park.

🏠 75, Kitakoganecho, Date
 📅 Kitakogane Shell Mound Information Center is closed in winter (Dec. - Mar.)
 🕒 9:00 AM - 5:00 PM ☎ 0142-24-2122

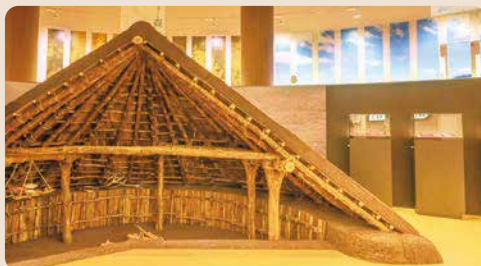


7 Irie-Takasago Shell Mound Museum/ Abuta Folklore Museum

Learn about a history that dates back to ancient times

The Jomon Archaeological Sites in Hokkaido and Northern Tohoku, including the Kitakogane Shell Mound, were designated as World Heritage Sites in July 2021. See excavated items at Irie-Takasago Shell Mound Museum and learn about the area's history and how people lived at Abuta Folklore Museum.

🏠 44, Takasagocho, Toyakocho
 🕒 9:00 AM - 5:00 PM
 📅 Mondays (next business day if Monday is a public holiday), New Year period
 ☎ 0142-76-5802 (facility) 0142-74-3010 (Toyoko Town Social Education Section)



8 Usu Zenkoji Temple & Usu Zenkoji Museum

A temple built by the Tokugawa Shogunate

The Usu Zenkoji Temple is a national historic site. At the Usu Zenkoji Museum next door, the temple's history is told through important cultural properties, a Shaka Nyorai Buddha statue and statue of Buddhist icon Enku. The grounds are also a famed cherry blossom spot.

🏠 124, Usucho, Date 🕒 9:00 AM - 5:00 PM (reservation required)
 ☎ 0142-38-2007



9 Funkawan Observatory Park

All kinds of recreation facilities and a gorgeous view of the bay

This park has larger-than-life recreation facilities, including a giant roller slide and an observation tower with a view of the whole bay. Located just a short walk from the Toyoura Parking Area, this is a great place for a detour.

🏠 67-1, Takaoka, Toyouracho
 📅 Tuesdays, closed in winter 🕒 9:00 AM - 5:00 PM
 ☎ 0142-83-1080



11 Kamui Chashi Historic Park

135 steps to an almost holy view

The name of this hilltop park means "divine fortress" in Ainu, and indeed, something about this park feels holy. Along with a wooden walking trail and azuma-ya (Japanese summer cottage), there's an observatory with a panoramic view of Funkawan Bay.

🏠 Rebunge, Toyouracho
 ☎ 0142-83-1408
 (Toyoura Town Office Fisheries, Commerce, Industry and Tourism Section)



See



See the Toyoura Tourist Association website for details

10 Indian Water Wheel Park

An up-close view of spawning salmon, and Steller's sea eagles and white-tailed eagles in winter

The Indian water wheel is a symbolic sight in Toyoura. The water wheel is used to catch salmon that swim up the Nukibetsu River, and you can get so close that if one jumps out of the water, it'll splash you!

🏠 89-1, Hamacho, Toyouracho
 ☎ 0142-83-1408
 (Toyoura Town Office Fisheries, Commerce, Industry and Tourism Section)



12 Literary Monument Park

A romantic coastline visited by historical greats

Toyoura is brimming with heritage sites and tales from history. Many great modern poets and authors visited, including Mokichi Saito, Tekkan and Akiko Yosano, and Sei Ito. Monuments with quotes from their works stand in a place with an incredible sunset view.

🏠 703, Rebunge, Toyouracho
 ☎ 0142-83-1408
 (Toyoura Town Office Fisheries, Commerce, Industry and Tourism Section)





13 Usu Lovers' Beach

A romantic sunset spot you'll want to visit with someone special

On a clear day, you can see Mt. Komagatake across Funkawan Bay. Take a stroll or pull up a deckchair and spend the day watching the sea.

🏠 Minamiusucho, Date
☎ 0142-25-2722 (Date Tourism Association)



15 Toyoura Nagisa Park Golf Course

Sweat it out with the waves as your soundtrack

A 3.2ha park golf area with three courses and 27 holes in total. Seasonal shrubs, boulders and flowerbeds adorn each course. You can rent a club and ball set for 200 yen per day.

🏠 25-5, Takaoka, Toyouracho ☎ 9:00 AM - 6:00 PM
📅 3rd Wednesday of each month in May - Oct., closed in winter
☎ 0142-83-1189

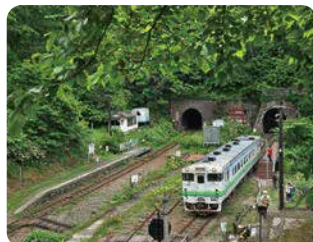


14 JR Koboro Station and Koboro Cave

A mysterious station near Koboro Cave

This unmanned station is dubbed the most mysterious station in Japan, with railroad and mystery enthusiasts alike coming from all over Japan to see it. Part of its mystique lies in its remoteness—it's only accessible by JR Hokkaido's Muroran Line and there are only a few trains there each day.

🏠 Rebunge, Toyouracho
☎ 0142-83-1408
Toyoura Town Office Fisheries, Commerce, Industry and Tourism Section)



16 Natural Hot Spring Shiosai

Relax and enjoy a panoramic view of the bay

This open-air hot spring is designed to resemble a big docked cruise ship, and offers a panoramic view of the bay. One bath has a Japanese aesthetic and the other has a Western one. Like many facilities, they're gender segregated and alternate each day.

🏠 109, Hamacho, Toyouracho
☎ 0142-83-1126



17 Toyoura Coast Park Camping Ground, Bathing Beach

A beach lover's playground with a hot spring right nearby

Located right by Funkawan Bay, this campsite is a great spot for swimming and fishing. It's also right by Natural Hot Spring Shiosai, where you can recharge after a day on the beach. Summer is short here, so people here pack in as much fun as possible.

🏠 Chisaki Kaihinch, Hamacho, Toyouracho ☎ 0142-82-8260



19 Ainu Cultural Information Center ikori (Rebunge Kaihin Park Caravansite)

A glimpse into Ainu culture and a breathtaking beach view

Ainu Cultural Information Center ikori holds performances such as traditional Ainu ceremonies around three times a year to share this indigenous culture with visitors. The center is right next to Rebunge Kaihin Park Campsite, which offers a spectacular close-up view of the beach. Pitch a tent in the open camping area, pull up a trailer in the trailer campsite or get settled in the cabin, then pop next door to enjoy a glimpse into Ainu culture.

🏠 Kaihinch, Rebunge, Toyouracho ☎ 0142-82-8260



See the Toyoura Tourist Association website for details on 15-20.

18 Toyoura Forest park

Take it easy and enjoy the greenery in this nature park

This campsite is located in a vast park with four forests. With bungalows available, it's ideal for those who are new to camping.

🏠 526-1, Rebunge, Toyouracho ☎ 0142-85-1120



20 Okishi Seaside Campsite

Off the beaten track, no reservation needed

This coastal campsite is off the beaten track—one for experienced campers! It overlooks the cape where Kamui Chashi Historic Park is located, and the view of the sunset over the water is second to none.

🏠 Okishi, Toyouracho ☎ 0142-84-1981



21 Arutori Misaki Campsite

A spectacular location facing the bay

This campsite's location on a cape jutting into Funkawan Bay makes it a favorite among those who love beautiful scenery. The sight of the sun setting over the sea is especially magical. A free cooking area and restrooms are available.

🏠 107, Minamiusucho, Date ☎ Late Apr. - end of Oct.
☎ 0142-82-3209 (Date City Office Commerce and Tourism Section (Economic and Environmental Affairs Department))





Information



Events

April

Haru Ichiban Date Half Marathon - Date City
Toyoko Long-run Fireworks
(until end of October) - Toyoko Town
Mt. Usu Beginning of Mountaineering Season Ceremony
to Pray for Safe Climbing - Date City

May

Toyoko Marathon - Toyoko Town

June

Toyoura Town Strawberries & Pork Festival - Toyoura Town
Toyoko Manga and Anime Festival - Toyoko Town
Toya Industry Festival - Toyoko Town
Otaki International Nordic Hiking - Date City

July

Usu Beginning of Swimming Season Ceremony to Pray for
Safe Swimming - Date City
Summer Festival in Toyako - Toyoko Town
Toya Summer Festival - Toyoko Town
Date Funkawan Bay Jomon Festival - Date City

August

Date Warrior Festival - Date City
Hokkaido Triathlon - Toyako, Sobetsu and Toyoura Towns
Toyouura Taisensha Summer Festival - Toyoura Town

October

Date Farming, Fisheries and Major Products Festival -
Date City
Sobetsu Apple Festival - Sobetsu Town

November

Toyouura World Scallop Fishing Team Championship -
Toyouura Town
Illumination Street (year round) - Toyoko Town
Toyoko Onsen Illumination Tunnel (until late April) -
Toyoko Town

December

Kitayuzawa Onsen Long Run Fireworks Display -
Date City

February

Date Snow Festival Fuyu no Jin - Date City
Toyoko Onsen Winter Fireworks Display -
Toyoko Town
Otaki International Ski Marathon - Date City
Mt. Showa-Shinzan International Snowball Fight
(Yukigassen) - Sobetsu Town

March

Marugoto Toyoura: Northern Harvest Festival -
Toyouura Town



Accommodation

Minami-Toya Area P3

Facilities marked with 🏨 offer day bathing.

- **Toyoko Manseikaku Hotel Lakeside Terrace** 🏨
21, Toyoko Onsen, Toyakocho
0570-08-3500
- **Zekkei no Yuyado Toya Kohan Tei** 🏨
7-8, Toyoko Onsen, Toyakocho
0570-026-571
- **The Lake View Toya Nonokaze Resort**
29-1, Toyoko Onsen, Toyakocho
0570-026-571
- **Toyoko Kanko Hotel** 🏨
33, Toyoko Onsen, Toyakocho
0142-75-2111
- **Hokkai Hotel** 🏨
147, Toyoko Onsen, Toyakocho
0142-75-2325
- **Toya Sun Palace Resort & Spa** 🏨
7-1, Toyoko Onsen, Sobetsucho
0142-75-1111
- **GRANVILLAGE TOYA Daiwa ryokan-Annex**
34-4, Toyoko Onsen, Toyakocho
0142-75-1085
- **Toya Onsen Hotel Hanabi** 🏨
6, Toyoko Onsen, Toyakocho
0142-75-3000
- **Yutorelo Toyoko** 🏨
78, Toyoko Onsen, Toyakocho
0570-086-115
- **Hotel Grand Toya** 🏨
144, Toyoko Onsen, Toyakocho
0142-75-2288
- **Toya Gokiraku Tei**
1-4, Toyoko Onsen, Toyakocho
0570-026-571
- **The LakeSuite KO no SUMIKA**
7, Toyoko Onsen, Sobetsucho
0142-82-4121

- **Hotel New Toyoko**
144, Toyoko Onsen, Toyakocho
0142-75-2818
- **Toya Green Hotel**
144, Toyoko Onsen, Toyakocho
0142-75-3030
- **Petit Hotel Koizumi**
354-6, Izumi, Toyakocho
0142-73-1377
- **Hotel Premium Lake Toya**
212-3, Toyoko Onsen, Toyakocho
0142-75-1011
- **Restaurant & Log Cabin Hotel Kitsutsuki Canadian Club**
8, Tsukiura, Toyakocho
0142-75-2228
- **Pension Ono**
56-2, Sobetsu Onsen, Sobetsucho
0142-75-4128
- **Hotel Naka-no-Shima**
103-15, Sobetsu Onsen,
Sobetsucho
0142-75-4115
- **Hotel Nakanoshima Bekkan**
103-15, Sobetsu Onsen,
Sobetsucho
0142-75-4115
- **Ikoi-so** 🏨
83, Sobetsu Onsen, Sobetsucho
0142-75-2522
- **TOYA Center Village**
105 Toyoko Onsen, Toyakocho
0142-75-1085
- **Toya Tsuruga Resort Hikari no Uta**
88-26, Sobetsu Onsen, Sobetsu Town
0142-82-7160
- **BOUROU LAKE TOYA**
7-8, Toyoko Onsen, Toyoko Town
0570-026-571

Tourist inquiries

Toyoko Onsen Tourist
Association
0142-75-2446
Address: Inside Toyoko Tourist
Information Center, 142,
Toyoko Onsen, Toyakocho



Toyamachizukuri Tourism
Association
0142-82-5277
Address: Inside Toya Mizu-no-Eki,
100, Toyamachi, Toyakocho



Kita-Toya Area P13

- **Phoenix Toya Club**
307-1, Toyamachi, Toyakocho
0142-87-2781
- **Lake House at Toyoko**
9-3, Takarada, Toyakocho
0142-87-2330
- **WE HOTEL TOYA**
293-1, Toyamachi, Toyakocho
0142-89-3333
- **Bangakuso** 🏨
18, Bankei, Sobetsucho
0142-65-2277
- **Bankei Onsen Yunotoya** 🏨
8-10, Bankei, Sobetsucho
0570-026-574
- **Midorinokaze Resort Kitayuzawa** 🏨
300-2, Kitayuzawa Onsencho, Otakiku,
Date
0570-026-574
- **Kitayuzawa Mori no Soraniwa** 🏨
300-7, Kitayuzawa Onsencho,
Otakiku, Date
0570-026-574
- **Yumoto Horohoro Sanso** 🏨
34, Kitayuzawa Onsencho,
Otakiku, Date
0570-026-574
- **Sawa no Yado Kinsenkaku** 🏨
40, Kitayuzawa Onsencho, Otakiku,
Date
0142-88-9054
- **Onsen Minshuku Takahashi** 🏨
39, Kitayuzawa Onsencho,
Otakiku, Date
0142-68-6665



Funkawan Toyoura
Tourist Association
0142-83-2222
Address: 2F JR Toyoura Station,
21-2, Asahicho, Toyouracho



Date Tourism Association
0142-25-2722
Address: Inside Date Chamber
of Commerce 24, Asahicho,
Date City



Funkawan Bay Area P23

- **The Windsor Hotel TOYA Resort & Spa**
336, Shimizu, Toyakocho
0570-056-510
- **Guest House Mine**
2-4, Kaiganchi, Toyouracho
0142-83-2179
- **Natural Hot Spring Shiosai** 🏨
109, Hamacho, Toyouracho
0142-83-1126
- **Date Prince Hotel**
47, Suenagacho, Date
0142-23-6211
- **Business Hotel Castle**
147-7, Yamashitacho, Date
0142-23-0286
- **Fukushimaya Ryokan**
32, Yamashitacho, Date
0142-23-3153
- **Nishiki Ryokan**
13, Nishikicho, Date
0142-22-1231
- **Date Onsen** 🏨
223, Tateyamashitacho, Date
0142-25-1919
- **Kangetu Ryokan**
318-2, Funaokacho, Date
0142-23-1393
- **Kankokan**
33, Usucho, Date
0142-38-2411



Toya Colors website



<https://toya-colors.com/en/>

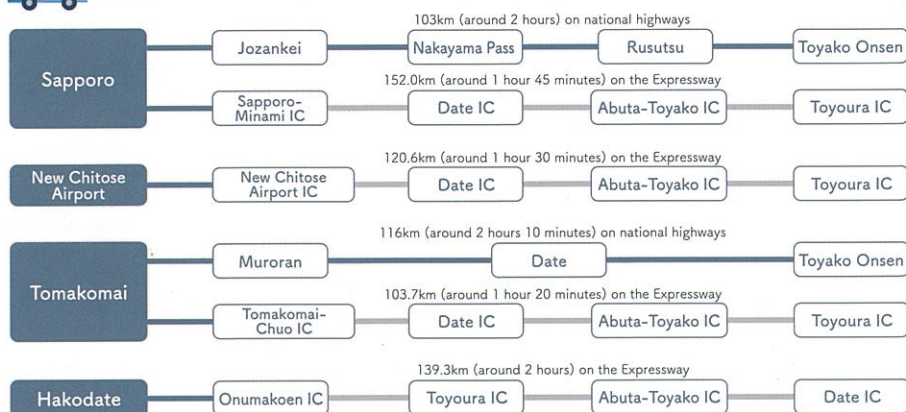
Sobetsu Tourist Association
0142-66-2750
Address: Inside Michinoeki
Sobetsu Johokan i Roadside Rest
Stop, 384-1, Takinomachi,
Sobetsucho



Getting There

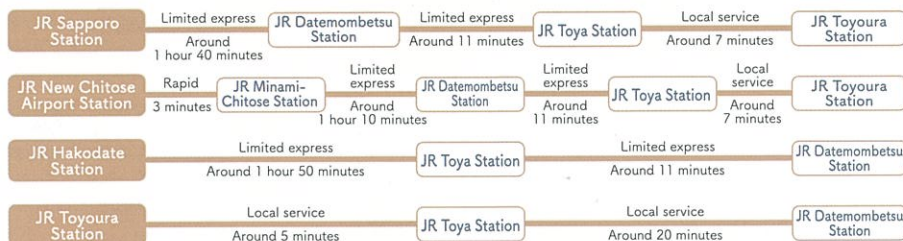


By car



Trains

*Take a Donan Bus or taxi from Toya Station to Toyoko Onsen.



Buses (Donan Bus) *Reservation required



● Donan Bus Toya Office — 0142-75-2351



Taxis (within Toya area)

- Kosei Taxi (Date City) — 0142-23-2626
- Date Hire (Date City) — 0142-23-3566
- Toyoura Hire (Toyouka Town) — 0142-83-2626
- Donan Hire (Sobetsu Town) — 0142-75-2277
- Mori Hire (Sobetsu Town) — 0142-66-2366
- Toyo Office, Meisei Auto, Co., Ltd. (Toyo Town) — 0142-75-2266



Safety Updates for Hokkaido Travel

Updates on transportation service suspensions in the event of an earthquake, heavy snow or other disasters.

Find real-time traffic and transportation status updates on the "Hokkaido Travel safety information" website.

Safety Updates for Hokkaido Travel
<https://hokkaido-safe-travel.brdg.site/>

